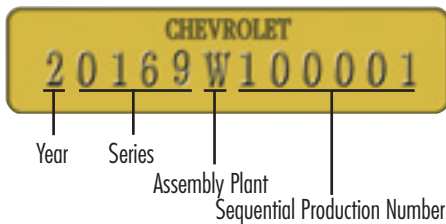


# Chevy II/ Nova V.I.N. Information

## V.I.N. Plate Location

**1962-67 Models** have the Vehicle Identification Number located on a steel plate riveted to the left door jamb on the hinge pillar.

### 1962-64 Models



1962-64 1st Digit: Model Year:
2 = 1962
3 = 1963
4 = 1964

1962-64 2nd through 5th Digits: Model Series:			
Series	4 Cyl.	6 Cyl.	Model
1962			
100	01	02	11, 69, 35
300	03	04	11, 69, 45
Nova	---	04	41, 37, 67, 49, 35

1963			
100	01	02	11, 69, 35
300	03	04	11, 69, 45
Nova	---	04	37, 67, 49, 35

1964 - V8 engines were an option and are coded as a 6 Cylinder Series			
Chevy II	01	02	11, 69, 35
Nova	---	04	11, 37, 47, 69, 35

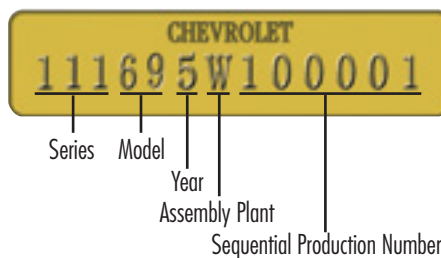
Model	Body Style
11	2 Door Sedan
35	4 Door Station Wagon - 6 Passenger
37	2 Door Sport Coupe
41	2 Door Sedan (1962 Only)
45	4 Door Station Wagon - 9 Passenger (1963 Only)
47	2 Door Sport Coupe Super Sport (1964 Only)
49	4 Door Sedan
67	2 Door Convertible
69	4 Door Sedan

1962-64 6th Digit: Assembly Plant:
G = Framingham, Massachusetts
K = Kansas City, Missouri
N = Norwood, Ohio
O = Oakland, California
W = Willow Run, Michigan

## V.I.N. Plate Location

**1968-1979 Models** have the Vehicle Identification Number located on a steel plate riveted to the upper dash panel, visible through the windshield.

### 1965-71 Models



1965-71 1st Through 5th Digits: Model Series:				
Series	4 Cyl.	6 Cyl.	8 Cyl.	Model
1965				
Chevy II	111	113	114	11, 69, 35
Nova	---	115	116	37, 69, 35
Super Sport	---	117	118	37

1966				
Chevy II	111	113	114	11, 69, 35
Nova	---	115	116	37, 69, 35
Super Sport	---	117	118	37

1967				
Chevy II	111	113	114	11, 69, 35
Nova	---	115	116	37, 69, 35
Super Sport	---	117	118	37

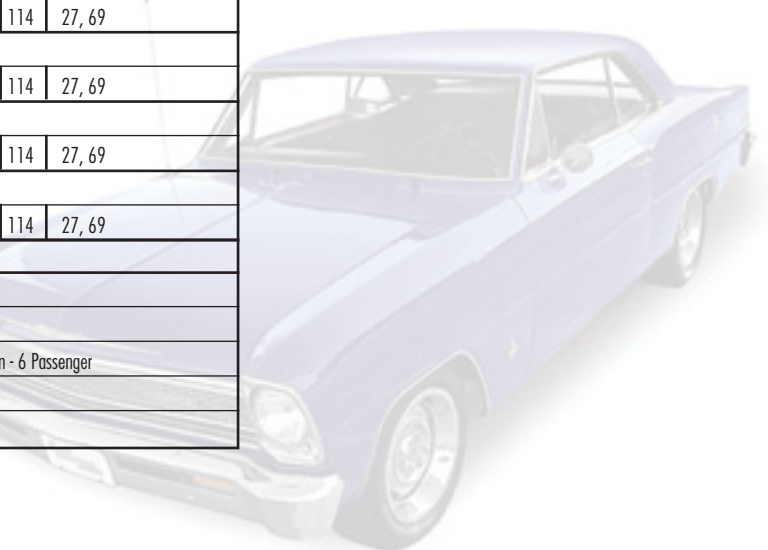
1968				
Chevy II	111	113	114	27, 69
1969				
Nova	111	113	114	27, 69

1970				
Nova	111	113	114	27, 69
1971				
Nova	---	113	114	27, 69

Model	Body Style
11	2 Door Sedan
27	2 Door Coupe
35	4 Door Station Wagon - 6 Passenger
37	2 Door Sport Coupe
69	4 Door Sedan

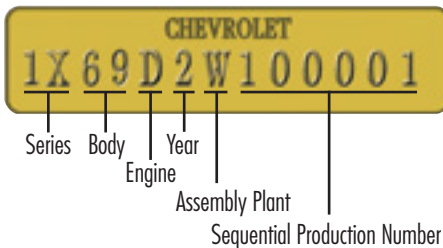
1965-71 6th Digit: Model Year:
5 = 1965
6 = 1966
7 = 1967
8 = 1968
9 = 1969
0 = 1970
1 = 1971

1965-71 7th Digit: Assembly Plant:
N = Norwood, Ohio
O = Oshawa, Ontario, Canada
W = Willow Run, Michigan



# Chevy II/ Nova V.I.N. Information

## 1972-79 Models



1972-79 1st Through 4th Digits: Model Series:			
Model	Series	Body	Style
1972			
Nova	1X	27	2 Door Coupe
Nova	1X	69	4 Door Sedan
1973-74			
Nova	1X	27	2 Door Coupe
Nova	1X	17	2 Door Hatchback
Nova	1X	69	4 Door Sedan
Custom	1Y	27	2 Door Coupe
Custom	1Y	17	2 Door Hatchback
Custom	1Y	69	4 Door Sedan
1975			
Nova / S	1X	27	2 Door Coupe
Nova	1X	17	2 Door Hatchback
Nova	1X	69	4 Door Sedan
Custom / LN	1Y	27	2 Door Coupe
Custom	1Y	17	2 Door Hatchback
Custom / LN	1Y	69	4 Door Sedan
1976-77			
Nova	1X	27	2 Door Coupe
Nova	1X	17	2 Door Hatchback
Nova	1X	69	4 Door Sedan
Concours	1Y	27	2 Door Coupe
Concours	1Y	17	2 Door Hatchback
Concours	1Y	69	4 Door Sedan
1978-79			
Nova	1X	27	2 Door Coupe
Nova	1X	17	2 Door Hatchback
Nova	1X	69	4 Door Sedan
Custom	1Y	27	2 Door Coupe
Custom	1Y	69	4 Door Sedan

1972-79 5th Digit: Engine Code			
Year	Code	C.I. / Litre	Induction
1972-79	D	250	1 bbl.
1972-73	F	307	2 bbl.
1975-76	G	262	2 bbl.
1979	G	305	2 bbl.
1972-75	H	350	2 bbl.
1972	J	350	4 bbl.
1973-74	K	350	4 bbl.
1976-79	L	350	4 bbl.
1976	Q	305	2 bbl.
1977-78	U	305	2 bbl.

1972-79 6th Digit: Model Year:	
2	= 1972
3	= 1973
4	= 1974
5	= 1975
6	= 1976
7	= 1977
8	= 1978
9	= 1979

1972-79 7th Digit: Assembly Plant:	
K	= Kansas City, Missouri
L	= Van Nuys, California
N	= Norwood, Ohio
T	= Tarrytown, New York
W	= Willow Run, Michigan

## Model Year Production

*Note: These numbers are not exact. They were compiled from reliable resources, but, even Chevrolet, or GM, does not know exactly how many Chevy II/Novas were delivered to the public.*

1962	=	326,607
1963	=	372,626
1964	=	191,691
1965	=	118,000
1966	=	133,400
1967	=	106,500
1968	=	147,570
1969	=	251,903
1970	=	315,122
1971	=	194,878
1972	=	349,733
1973	=	369,511
1974	=	390,537
1975	=	273,014
1976	=	334,728
1977	=	365,264
1978	=	288,109
1979	=	94,721

