

# Chevrolet V.I.N. Information

## 1958-59 Models

1958-59 models have the vehicle Identification number located on a steel plate riveted to the left door jamb on the hinge pillar.



2nd & 3rd Digits: Model Year:
58 = 1958
59 = 1959

4th Digit: Assembly Plant:
A = Atlanta, Georgia
B = Baltimore, Maryland
F = Flint, Michigan
G = Framingham, Massachusetts
J = Janesville, Wisconsin
K = Kansas City, Missouri
L = Los Angeles, California
N = Norwood, Ohio
O = Oakland, California
S = St. Louis, California
T = Tarrytown, New York
W = Willow Run, Michigan

1st Digit: Model Series:		
A =	1100	6 Cylinder
B =	1200	8 Cylinder
C =	1500	6 Cylinder
D =	1600	6 Cylinder
E =	1700	6 Cylinder
F =	1800	6 Cylinder
G =	1100	Sedan Delivery only 6 Cylinder
H =	1200	Sedan Delivery only 8 Cylinder

## 1960-64 Models

1960-64 models have the vehicle Identification number located on a steel plate riveted to the left door jamb on the hinge pillar.



1st Digit: Model Year:	
0 =	1960
1 =	1961
2 =	1962
3 =	1963
4 =	1964

# 1960-64 Models

continued

2nd through 5th Digits: Model Series			
Series	6 Cyl.	8 Cyl.	Model
1960			
Biscayne	11	12	11, 15, 19, 21, 35, 70, 80
Fleetmaster	13	14	11, 19
Bel Air	15	16	11, 19, 35, 37, 39, 45
Impala	17	18	19, 35, 37, 39, 67
1961			
Biscayne	11	12	11, 21, 35, 45, 69
Fleetmaster	13	14	11, 69
Bel Air	15	16	11, 35, 37, 39, 45, 69
Impala	17	18	11, 35, 37, 39, 45, 67, 69
1962			
Biscayne	11	12	11, 35, 69
Bel Air	15	16	11, 35, 37, 45, 69
Impala	17	18	35, 39, 45, 47, 67, 69
1963			
Biscayne	11	12	11, 35, 69
Bel Air	15	16	11, 35, 45, 69
Impala	17	18	35, 39, 45, 47, 67, 69
1964			
Biscayne	11	12	11, 35, 69
Super Sport	13	14	47, 67
Bel Air	15	16	11, 35, 45, 69
Impala	17	18	35, 39, 45, 47, 67, 69

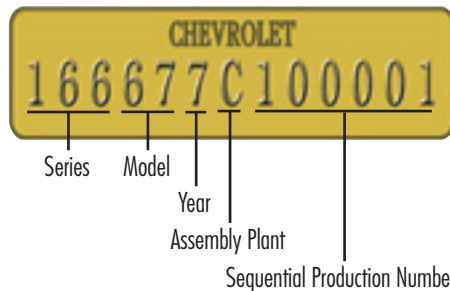
6TH Digit: Assembly Plant:	Years Produced This Location:
A = Atlanta, Georgia	0, 1, 2, 3, 4
B = Baltimore, Maryland	0, 1, 2, 3,
C = Doraville, Georgia	4
F = Flint, Michigan	0, 1, 2, 3, 4
G = Framingham, Massachusetts	0, 1, 2, 3, 4
J = Janesville, Wisconsin	0, 1, 2, 3, 4
K = Kansas City, Missouri	0, 1, 2, 3,
L = Los Angeles, California	0, 1, 2, 3, 4
N = Norwood, Ohio	0, 1, 2,
O = Oakland, California	0, 1
R = Arlington, Texas	3, 4
S = St. Louis, California	0, 1, 2, 3, 4
T = Tarrytown, New York	0, 1, 2, 3, 4
U = Southgate, California	4
W = Willow Run, Michigan	0
Y = Wilmington, Delaware	4

# 1965-71 Models

## 1965-71 Models

1965-67 models have the vehicle Identification number located on a steel plate riveted to the left door jamb on the hinge pillar.

1968-71 models have the vehicle Identification number located on a steel plate riveted to the upper dash panel. Visible through the driver's side lower corner of the windshield, from the outside of the vehicle.



1st Through 5th Digits: Model Series:			
Series	6 Cyl.	8 Cyl.	Model
1965			
Biscayne	153	154	11, 35, 69
Bel Air	155	156	11, 35, 69
Impala	163	164	35, 37, 39, 45, 67, 69
Super Sport	165	166	37, 67
1966			
Biscayne	153	154	11, 35, 69
Bel Air	155	156	11, 35, 69
Impala	163	164	35, 37, 39, 45, 67, 69
Caprice	X	166	35, 39, 45, 47
1967			
Biscayne	153	154	11, 35, 69
Bel Air	155	156	11, 35, 45, 69
Impala	163	164	35, 39, 45, 67, 69, 87
Caprice	X	166	35, 39, 45, 47
Impala SS	167	168	67, 87
1968			
Biscayne	153	154	11, 35, 69
Bel Air	155	156	11, 35, 45, 69
Impala	163	164	35, 39, 45, 67, 69, 87
Impala Custom	X	164	47
Caprice	X	166	35, 39, 45, 47
1969			
Biscayne	153	154	11, 36, 69
Bel Air	155	156	11, 36, 46, 69
Impala	163	164	37, 39, 67, 69
Impala Custom	X	164	36, 46, 47
Caprice	X	166	36, 39, 46, 47

1970			
Biscayne	153	154	36, 69
Bel Air	155	156	36, 46, 69
Impala	163	164	36, 37, 39, 46, 47, 67, 69
Caprice	X	166	36, 39, 46, 47
1971			
Biscayne	153	154	11, 35, 69
Bel Air	155	156	11, 35, 69
Impala	163	164	35, 37, 39, 45, 67, 69
Caprice	X	166	35, 39, 45, 47

6th Digit: Model Year:	
5 =	1965
6 =	1966
7 =	1967
8 =	1968
9 =	1969

7TH Digit: Assembly Plant:	Years Produced This Location:
A = Atlanta, Georgia	5, 6,
C = Southgate, California	5, 6, 7, 8, 9, 0, 1
D = Doraville, Georgia	5, 6, 7, 8, 9, 0, 1
F = Flint, Michigan	5, 6, 7, 8, 9
G = Framingham, Massachusetts	5, 6,
J = Janesville, Wisconsin	5, 6, 7, 8, 9, 0, 1
L = Los Angeles, California	5, 6, 7, 8, 9
N = Norwood, Ohio	5, 6,
R = Arlington, Texas	5, 6, 7, 8, 9, 0
S = St. Louis, California	5, 6, 7, 8, 9, 0, 1
T = Tarrytown, New York	5, 6, 7, 8, 9, 0, 1
U = Lordstown, Ohio	5, 6, 7, 8, 9, 0
Y = Wilmington, Delaware	5, 6, 7, 8, 9, 0, 1
O = Oshawa, Ontario, Canada	5, 6
1 = Oshawa, Ontario, Canada	8, 9, 0, 1
2 = St. Therese, Quebec, Canada	7, 8, 9, 0