

Model Year Production

Note: These numbers are not exact. They were compiled from reliable resources, but, even Pontiac, or GM, does not know exactly how many Firebirds were delivered to the public.

1967	=	82,560
1968	=	107,112
1969	=	87,011
1970	=	48,739
1971	=	53,125
1972	=	29,951
1973	=	46,363
1974	=	73,189
1975	=	84,063
1976	=	110,778
1977	=	155,735
1978	=	187,284
1979	=	211,453
1980	=	107,340
1981	=	70,899
1982	=	116,362
1983	=	74,884
1984	=	128,304
1985	=	95,880
1986	=	110,463
1987	=	88,587
1988	=	62,455
1989	=	71,441
1990	=	20,352
1991	=	50,454
1992	=	27,567
1993	=	15,475
1994	=	47,117
1995	=	50,987
1996	=	30,982
1997	=	30,756
1998	=	32,155
1999	=	32,987
2000	=	31,826
2001	=	14,204
2002	=	30,690

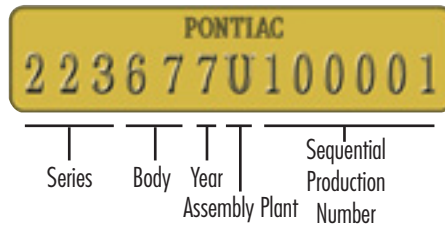
Firebird V.I.N. Information

V.I.N. Plate Location

1967 Models have the Vehicle Identification Number located on a steel plate riveted to the left door jamb on the hinge pillar.

1968-2002 Models have the Vehicle Identification Number located on a steel plate riveted to the upper dash panel, visible through the driver's side lower corner of the windshield from the outside of the vehicle.

1967-69 Models

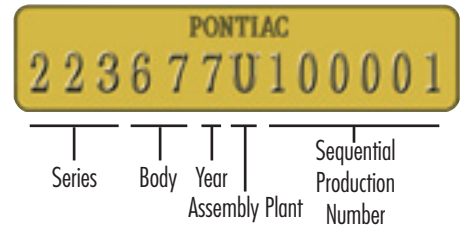


1967-69 1st Through 5th Digits: Model Series		
Year	Series	Body
1967	223	37 Coupe, 67 Convertible
1968	223	37 Coupe, 67 Convertible
1969	223	37 Coupe, 67 Convertible

1967-69 6th Digit: Model Year		1967-69 7th Digit: Assembly Plant	
Year	Code	Code	Location
1967	7	U	Lordstown, Ohio
1968	8	N	Norwood, Ohio
1969	9	L	Van Nuys, California

1967-69 8th Digit: Engine		
Code	Series	
1	V8	
6	6 Cylinder	

1970-71 Models



1970-71 1st Through 5th Digits: Model Series			
Year	Series	Body	Model
1970	223	87 Coupe	Base Firebird
1970	224	87 Coupe	Esprit
1970	226	87 Coupe	Formula
1970	228	87 Coupe	Trans Am
1971	223	87 Coupe	Base Firebird
1971	224	87 Coupe	Esprit
1971	226	87 Coupe	Formula
1971	228	87 Coupe	Trans Am

1970-71 6th Digit: Model Year		1970-71 7th Digit: Assembly Plant	
Year	Code	Code	Location
1970	0	N	Norwood, Ohio
1971	1	L	Van Nuys, California

1970-71 8th Digit: Engine		
Code	Series	
1	V8	
6	6 Cylinder	

Firebird V.I.N. Information

1972-80 Models

PONTIAC
2V87X2N100001

Series Body Engine Year Assembly Plant Sequential Production Number

1972-80 1st Through 4th Digits: Model Series			
Year	Series	Body	Model
1972-75	1S	87 Coupe	Base Firebird
1972-75	1T	87 Coupe	Esprit
1972-75	1U	87 Coupe	Formula
1972-75	1V	87 Coupe	Trans Am
1976-78	1S	87 Coupe	Base Firebird
1976-78	1T	87 Coupe	Esprit
1976-78	1U	87 Coupe	Formula
1976-78	1W	87 Coupe	Trans Am
1979-80	1S	87 Coupe	Base Firebird
1979-80	1T	87 Coupe	Esprit
1979-80	1U	87 Coupe	Formula
1979-80	1W	87 Coupe	Trans Am
1979	1X	87 Coupe	10th Anniv. Trans Am
1980	1X	87 Coupe	Turbo Pace Car

1972-80 6th Digit: Model Year			1972-80 7th Digit: Assembly Plant	
Year	Code		Code	Location
1972	2		N	Norwood, Ohio
1973	3		L	Van Nuys, California
1974	4			
1975	5			
1976	6			
1977	7			
1978	8			
1979	9			
1980	A			

1972-80 5th Digit: Engine Code			
Year	Code	C.I. / Litre	Option
1978-80	A	231	2 bbl.
1977	C	231	2 bbl.
1972-76	D	250	
1979	G	305	2 bbl.
1975	H	350	4 bbl., Single Exh.
1980	H	305	4 bbl.
1977-79	K	403	4 bbl.
1977-79	L	350	4 bbl.
1972-76	M	350	2 bbl., Single Exh.
1972-74	N	350	2 bbl., Dual Exh.
1972-74	P	400	2 bbl., Dual Exh.
1976	P	350	4 bbl., Single Exh.
1972-74	R	400	2 bbl., Single Exh.
1977-79	R	350	4 bbl.
1973-75	S	400	4 bbl., Single Exh.
1980	S	265	2 bbl.
1972-74	T	400	4 bbl., Dual Exh.
1980	T	301 Turbo	4 bbl.
1978	U	305	2 bbl.
1975-76	W	455 HO	4 bbl., Dual Exh.
1979-80	W	301	4 bbl.
1972-74	X	455 SD	4 bbl., Dual Exh.
1973-74	Y	455	4 bbl., Dual Exh.
1977-79	Y	301	2 bbl.
1976-79	Z	400	4 bbl., Dual Exh.

1981-84 Models

PONTIAC
1G2AX87TXBN100001

Origin Restraint Series Engine Body Check Year Sequential Production Number Assembly Plant

1981-84 1st Through 7th Digits: Model Series					
Year	Origin	Restraint	Series	Body	Model
1981-84	1G2	A	S	87	Base Firebird
1981	1G2	A	T	87	Esprit
1981	1G2	A	V	87	Formula
1981-84	1G2	A	W	87	Trans Am
1981-84	1G2	A	X	87	Turbo / SE

1981-84 8th Digit: Engine Code			
Year	Code	C.I. / Litre	Induction
1981	A	231	2 bbl.
1983	F	151 / 2.5	TBI
1984	G	305 / 5.0 HO	4 bbl.
1981-84	H	305 / 5.0	4 bbl.
1983-84	L	173 / 2.8	TBI
1981	S	265	2 bbl.
1983	S	305 / 5.0	EFI
1981	T	301 Turbo	4 bbl.
1981	W	301	4 bbl.
1982	1	173 / 2.8	4 bbl.
1983-84	1	173 / 2.8	TBI
1982-84	2	151 / 2.5	TBI
1982	7	305 / 5.0	EFI

1981-84 9th Digit: Check Digit
Used for Internal Checks at Manufacturing Plant

1981-84 10th Digit: Model Year			1981-84 11th Digit: Assembly Plant	
Year	Code		Code	Location
1981	B		N	Norwood, Ohio
1982	C		L	Van Nuys, California
1983	D			
1984	E			



Firebird V.I.N. Information

1985-86 Models

1987-02 Models

PONTIAC					
1G2FW87CXFN100001					
Origin	Series	Body	Engine	Year	Sequential Production Number
			Check		Assembly Plant

PONTIAC					
1G2FW218XHN100001					
Origin	Series	Body	Engine	Year	Sequential Production Number
		Restraint	Check		Assembly Plant

1985-86 1st Through 7th Digits: Model Series				
Year	Origin	Series	Body	Model
1985-86	1G2	FS	87	Base Firebird
1985-86	1G2	FW	87	Trans Am
1985-86	1G2	FX	87	Special Edition

1985-86 8th Digit: Engine Code			
Year	Code	C.I. / Litre	Induction
1985-86	F	305 / 5.0	LB9
1985-86	G	305 / 5.0	L69
1985-86	H	305 / 5.0	LG4
1986	S	173 / 2.8	LB8
1985	1	173 / 2.8	LC1
1985	2	151 / 2.5	LQ9

1985-86 9th Digit: Check Digit	
Used for Internal Checks at Manufacturing Plant	

1985-86 10th Digit: Model Year			1985-86 11th Digit: Assembly Plant	
Year	Code		Code	Location
1985	F		N	Norwood, Ohio
1986	G		L	Van Nuys, California

1987-02 1st Through 6th Digits: Model Series				
Year	Origin	Series	Body	Model
1987-90	1G2	FS	2 Cpe	Firebird
1987-90	1G2	FW	2 Cpe	Trans Am
1991	1G2	FS	2 Cpe, 3 Cnv	Firebird
1991	1G2	FW	2 Cpe, 3 Cnv	Trans Am
1992	1G2	FS	2 Cpe, 3 Cnv	Firebird
1992	1G2	FV	2 Cpe, 3 Cnv	Trans Am
1993	2G2	FS	2 Cpe	Firebird
1993	2G2	FV	2 Cpe	Formula / TA
1994-02	2G2	FS	2 Cpe, 3 Cnv	Firebird
1994-02	2G2	FV	2 Cpe, 3 Cnv	Formula / TA

1987-02 7th Digit: Restraint System	
Code	Type
1	Manual Belts
2	Manual Belts with Dual Airbag
3	Manual Belts with Driver Airbag

1987-02 8th Digit: Engine Code			
Year	Code	C.I. / Litre	Induction
1988-92	E	305 / 5.0	TBI
1987-92	F	305 / 5.0	TPI
1998-02	G	346 / 5.7	MFI
1987	H	305 / 5.0	4 bbl.
1996-02	K	231 / 3.8	MFI
1993-97	P	350 / 5.7	MFI
1987-89	S	173 / 2.8	MFI
1993-95	S	207 / 3.4	SFI
1990-92	T	191 / 3.1	MFI
1989	7	231 / 3.8	SFI Turbo
1987-92	8	350 / 5.7	TPI

1987-02 9th Digit: Check Digit	
Used for Internal Checks at Manufacturing Plant	

1987-02 10th Digit: Model Year				
Year	Code		Year	Code
1987	H		1995	S
1988	J		1996	T
1989	K		1997	V
1990	L		1998	W
1991	M		1999	X
1992	N		2000	Y
1993	P		2001	1
1994	R		2002	2

1987-02 11th Digit: Assembly Plant		
Code	Location	
N	Norwood, Ohio	
L	Van Nuys, California	
2	St. Therese, Quebec, Canada	

