

Camaro V.I.N. Information

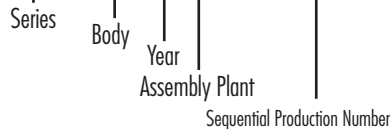
V.I.N. Plate Location

1967 Models have the Vehicle Identification Number located on a steel plate riveted to the left door jamb on the hinge pillar.

1968-2002 Models have the Vehicle Identification Number located on a steel plate riveted to the upper dash panel, visible through the driver's side lower corner of the windshield from the outside of the vehicle.



1967-71 Models



1967-71 1st Through 5th Digits: Model Series

Year	6 Cyl.	8 Cyl.	Body
1967	123	124	37 Coupe, 67 Convertible
1968	123	124	37 Coupe, 67 Convertible
1969	123	124	37 Coupe, 67 Convertible
1970	123	124	87 Coupe
1971	123	124	87 Coupe

1967-71 6th Digit: Model Year

Year	Code	
1967	7	
1968	8	
1969	9	
1970	0	
1971	1	

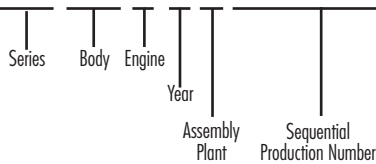
1967-71 7th Digit: Assembly Plant

Code	Location	
N	Norwood, Ohio	
L	Van Nuys, California	



Camaro V.I.N. Information

1972-80 Models



1972-80 1st Through 4th Digits: Model Series

Year	Series	Body	Model
1972	1Q	87 Coupe	Camaro
1973	1Q	87 Coupe	Camaro
1973	1S	87 Coupe	Type LT
1974	1Q	87 Coupe	Camaro
1974	1S	87 Coupe	Type LT
1975	1Q	87 Coupe	Camaro
1975	1S	87 Coupe	Type LT
1976	1Q	87 Coupe	Camaro
1976	1S	87 Coupe	Type LT
1977	1Q	87 Coupe	Camaro
1977	1Q	87 Coupe	Z28
1977	1S	87 Coupe	Type LT
1978	1Q	87 Coupe	Camaro
1978	1Q	87 Coupe	Z28
1978	1Q	87 Coupe	Rally Sport
1978	1S	87 Coupe	Type LT
1979	1Q	87 Coupe	Camaro
1979	1Q	87 Coupe	Z28
1979	1Q	87 Coupe	Rally Sport
1979	1S	87 Coupe	Berlinetta
1980	1P	87 Coupe	Camaro
1980	1P	87 Coupe	Z28
1980	1P	87 Coupe	Rally Sport
1980	1S	87 Coupe	Berlinetta

1972-80 6th Digit: Model Year

Year	Code		
1972	2		
1973	3		
1974	4		
1975	5		
1976	6		
1977	7		
1978	8		
1979	9		
1980	A		

1972-80 5th Digit: Engine Code

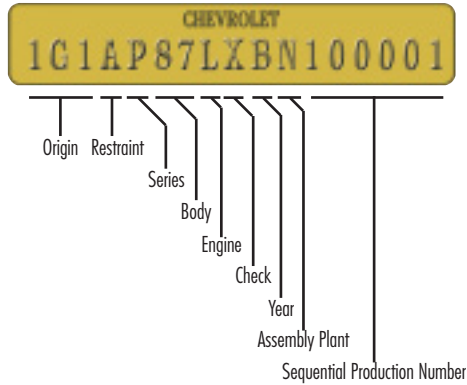
Year	Code	Cubic Inch / Litre	Option
1972	D	250	L22 - 110hp, 1 bbl.
1972	F	307	130hp, 2 bbl.
1972	H	350	L65 - 165hp, 2 bbl.
1972	K	350 SS	L48 - 200hp, 4 bbl.
1972	L	350 Z28	255hp, 4 bbl.
1972	U	396 SS	LS3 - 240hp, 4 bbl.
1973	D	250	L22 - 100hp, 1 bbl.
1973	F	307	115hp, 2 bbl.
1973	H	350	L65 - 145hp, 2 bbl.
1973	K	350 SS	L48 - 175hp, 4 bbl.
1973	T	350 Z28	245hp, 4 bbl.
1974	D	250	L22 - 100hp, 1 bbl.
1974	H	350	L65 - 145hp, 2 bbl.
1974	V	350 FED	L65 - 145hp, 2 bbl.
1974	L	350 CA	LM1 - 160hp, 4 bbl.
1974	K	350 SS	L48 - 185hp, 4 bbl.
1974	T	350 Z28	245hp, 4 bbl.
1975	D	250	L22 - 105hp, 1 bbl.
1975	V	350 FED	L65 - 145hp, 2 bbl.
1975	L	350 CA / ALT	LM1 - 155hp, 4 bbl.
1976	D	250	L22 - 105hp, 1 bbl.
1976	Q	305	LG3 - 140hp, 2 bbl.
1976	L	350	LM1 - 165hp, 4 bbl.
1977	D	250	L22 - 110hp, 1 bbl.
1977	U	305	LG3 - 145hp, 2 bbl.
1977	L	350	LM1 - 170hp, 4 bbl.
1978	D	250	L22 - 110hp, 1 bbl.
1978	U	305	LG3 - 145hp, 2 bbl.
1978	L	350	LM1 - 170hp, 4 bbl.
1979	D	250	L22 - 100hp, 1 bbl.
1979	G	305	LG3 - 135hp, 2 bbl.
1979	L	350	LM1 - 170hp, 4 bbl.
1980	K	229 / 3.8	LC3 - V6, 2 bbl.
1980	A	231 / 3.8	LD5 - V6, 2 bbl.
1980	J	267 / 4.4	LC3 - V8, 2 bbl.
1980	H	305 / 5.0	LG4 - V8, 4 bbl.
1980	L	350 / 5.7	LM1 - V8, 4 bbl.

1972-80 7th Digit: Assembly Plant

Code	Location	
N	Norwood, Ohio	
L	Van Nuys, California	

Camaro V.I.N. Information

1981-86 Models



1981-86 1st Through 7th Digits: Model Series

Year	Origin	Restraint	Series	Body	Model
1981	1G1	A	P	87	Camaro
1981	1G1	A	P	87	Z28
1981	1G1	A	S	87	Berlinetta
1982	1G1	A	P	87	Camaro
1982	1G1	A	P	87	Z28
1982	1G1	A	S	87	Berlinetta
1983	1G1	A	P	87	Camaro
1983	1G1	A	P	87	Z28
1983	1G1	A	S	87	Berlinetta
1984	1G1	A	P	87	Camaro
1984	1G1	A	P	87	Z28
1984	1G1	A	S	87	Berlinetta
1985	1G1	A	P	87	Camaro
1985	1G1	A	P	87	Z28
1985	1G1	A	S	87	Berlinetta
1986	1G1	A	P	87	Camaro
1986	1G1	A	P	87	Z28
1986	1G1	A	P	87	IROC-Z
1986	1G1	A	S	87	Berlinetta

1981-86 8th Digit: Engine Code

Year	Code	Cubic Inch / Litre	Option
1981	K	229 / 3.8	V6
1981	A	231 / 3.8	LD5
1981	J	267 / 4.4	L39
1981	H	305 / 5.0	V8
1981	L	350 / 5.7	V8
1982	F	151 / 2.5	LQ8
1982	2	151 / 2.5	LQ9
1982	1	173 / 2.8	LC1
1982	7	305 / 5.0	LU5
1982	H	305 / 5.0	LG4
1983	F	151 / 2.5	LQ8
1983	2	151 / 2.5	LQ9
1983	1	173 / 2.8	LC1
1983	7	305 / 5.0	L69
1983	H	305 / 5.0	LG4
1983	S	305 / 5.0	LU5
1984	2	151 / 2.5	LQ9
1984	1	173 / 2.8	LC1
1984	G	305 / 5.0	L69
1984	H	305 / 5.0	LG4
1985	2	151 / 2.5	LQ9
1985	1	173 / 2.8	LC1
1985	F	305 / 5.0	LB9
1985	G	305 / 5.0	L69
1985	H	305 / 5.0	LG4
1986	S	173 / 2.8	LB8
1986	F	305 / 5.0	LB9
1986	G	305 / 5.0	L69
1986	H	305 / 5.0	LG4

1981-86 9th Digit: Check Digit

Used for Internal Checks at Manufacturing Plant

1981-86 10th Digit: Model Year

Year	Code		
1981	B		
1982	C		
1983	D		
1984	E		
1985	F		
1986	G		

1981-86 11th Digit: Assembly Plant

Code	Location	
N	Norwood, Ohio	
L	Van Nuys, California	

Camaro V.I.N. Information

1987-02 Models

1987-02 1st Through 6th Digits: Model Series

Year	Origin	Series	Body	Model
1987	1G1	FP	2 Cpe, 3 Conv	Camaro
1987	1G1	FP	2 Cpe, 3 Conv	LT (RPO)
1987	1G1	FP	2 Cpe, 3 Conv	Z28
1987	1G1	FP	2 Cpe, 3 Conv	IROC-Z
1988	1G1	FP	2 Cpe, 3 Conv	Camaro
1988	1G1	FP	2 Cpe, 3 Conv	IROC-Z
1989	1G1	FP	2 Cpe, 3 Conv	RS
1989	1G1	FP	2 Cpe, 3 Conv	IROC-Z
1990	1G1	FP	2 Cpe, 3 Conv	RS
1990	1G1	FP	2 Cpe, 3 Conv	IROC-Z
1991	1G1	FP	2 Cpe, 3 Conv	RS
1991	1G1	FP	2 Cpe, 3 Conv	Z28
1992	1G1	FP	2 Cpe, 3 Conv	RS
1992	1G1	FP	2 Cpe, 3 Conv	Z28
1993	2G1	FP	2 Coupe	Camaro
1993	2G1	FP	2 Coupe	Z28
1994	2G1	FP	2 Cpe, 3 Conv	Camaro
1994	2G1	FP	2 Cpe, 3 Conv	Z28
1995	2G1	FP	2 Cpe, 3 Conv	Camaro
1995	2G1	FP	2 Cpe, 3 Conv	Z28
1996	2G1	FP	2 Cpe, 3 Conv	Camaro
1996	2G1	FP	2 Cpe, 3 Conv	RS
1996	2G1	FP	2 Cpe, 3 Conv	Z28
1996	2G1	FP	2 Cpe, 3 Conv	SS (RPO)
1997	2G1	FP	2 Cpe, 3 Conv	Camaro
1997	2G1	FP	2 Cpe, 3 Conv	RS
1997	2G1	FP	2 Cpe, 3 Conv	Z28
1997	2G1	FP	2 Cpe, 3 Conv	SS (RPO)
1998	2G1	FP	2 Cpe, 3 Conv	Camaro
1998	2G1	FP	2 Cpe, 3 Conv	Z28
1998	2G1	FP	2 Cpe, 3 Conv	SS (RPO)
1999	2G1	FP	2 Cpe, 3 Conv	Camaro
1999	2G1	FP	2 Cpe, 3 Conv	Z28
1999	2G1	FP	2 Cpe, 3 Conv	SS (RPO)
2000	2G1	FP	2 Cpe, 3 Conv	Camaro
2000	2G1	FP	2 Cpe, 3 Conv	Z28
2000	2G1	FP	2 Cpe, 3 Conv	SS (RPO)
2001	2G1	FP	2 Cpe, 3 Conv	Camaro
2001	2G1	FP	2 Cpe, 3 Conv	Z28
2001	2G1	FP	2 Cpe, 3 Conv	SS (RPO)
2002	2G1	FP	2 Cpe, 3 Conv	Camaro
2002	2G1	FP	2 Cpe, 3 Conv	Z28
2002	2G1	FP	2 Cpe, 3 Conv	SS (RPO)

1987-02 7th Digit: Restraint System

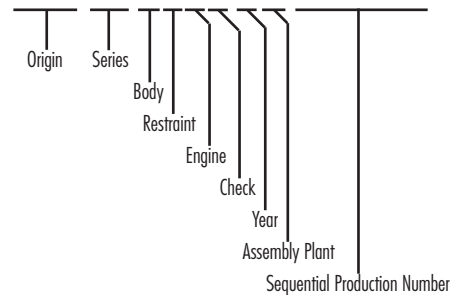
Code	System
1	Manual Belts
3	Driver Airbag
4	Automatic Belts

1987-02 8th Digit: Engine Code

Year	Code	Cubic Inch / Litre	Option
1987	S	173 / 2.8	LB8
1987	F	305 / 5.0	LB9
1987	H	305 / 5.0	LG4
1987	B	350 / 5.7	L98, B2L
1988	S	173 / 2.8	LB8
1988	E	305 / 5.0	LO3
1988	F	305 / 5.0	LB9
1988	B	350 / 5.7	L98, B2L
1989	S	173 / 2.8	LB8
1989	E	305 / 5.0	LO3
1989	F	305 / 5.0	LB9
1989	B	350 / 5.7	L98, B2L
1990	T	191 / 3.1	LHO
1990	E	305 / 5.0	LO3
1990	F	305 / 5.0	LB9
1990	B	350 / 5.7	L98, B2L
1991	T	191 / 3.1	LHO
1991	E	305 / 5.0	LO3
1991	F	305 / 5.0	LB9
1991	B	350 / 5.7	L98, B2L
1992	T	191 / 3.1	LHO
1992	E	305 / 5.0	LO3
1992	F	305 / 5.0	LB9
1992	B	350 / 5.7	L98, B2L
1993	S	207 / 3.4	L32
1993	P	350 / 5.7	LT1
1994	S	207 / 3.4	L32
1994	P	350 / 5.7	LT1
1995	S	207 / 3.4	L32
1995	K	231 / 3.8	L36
1995	P	350 / 5.7	LT1
1996	K	231 / 3.8	L36
1996	P	350 / 5.7	LT1
1997	K	231 / 3.8	L36
1997	P	350 / 5.7	LT1
1998	K	231 / 3.8	L36
1998	G	346 / 5.7	LS1
1999	K	231 / 3.8	L36
1999	G	346 / 5.7	LS1
2000	K	231 / 3.8	L36
2000	G	346 / 5.7	LS1
2001	K	231 / 3.8	L36
2001	G	346 / 5.7	LS1
2002	K	231 / 3.8	L36
2002	G	346 / 5.7	LS1

1987-02 9th Digit: Check Digit

Used for Internal Checks at Manufacturing Plant



1981-86 10th Digit: Model Year

Year	Code
1987	H
1988	J
1989	K
1990	L
1991	M
1992	N
1993	P
1994	R
1995	S
1996	T
1997	V
1998	W
1999	X
2000	Y
2001	1
2002	2

1987-02 11th Digit: Assembly Plant

Code	Location
N	Norwood, Ohio
L	Van Nuys, California
2	St. Therese, Quebec, Canada