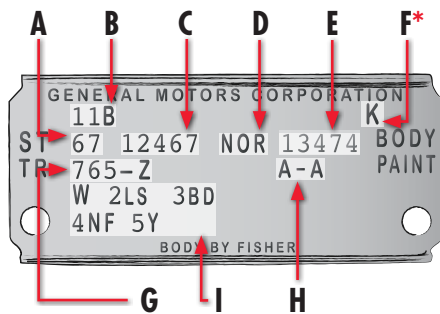


Cowl Trim Plate Identification

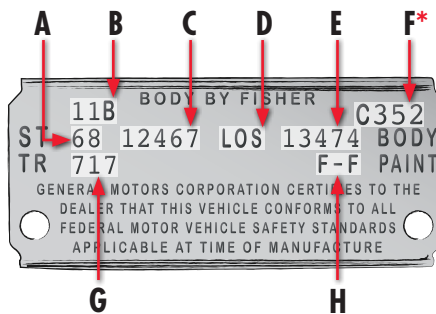
Chevrolet cowl tags or trim plates were attached various locations on the body of Camaro models from their inception in 1967 until 1985. The plates represented a vehicle's most basic body characteristics to Fisher Body, the coachworks for Chevrolet Motor Division. Codes listed included Model Year, Model Description (including model and body style), Assembly Plant, Body Sequence Number, Interior Tri Code, Body Paint Color, Build Date, and Accessory Code. In 1967, option codes were also listed on the cowl tag. For most model years, the cowl tag was riveted to the body, except in few cases including 1973 and 1974, where it was screwed to the body with sheet metal screws. From 1967 to 1969, the tag was located on the firewall next to the brake booster. From 1970 to 1981, the tag was attached to the cowl next to the windshield, facing up toward the hood. From 1982 to the end of their use in 1985, the tag was affixed to the radiator support.



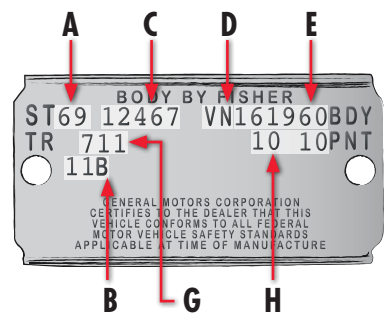
1967 Models



1968 Models



1969 & Later Models



A. Model Year Code

Last two digits of the model year. For example, the code for a vehicle body manufactured in 1967 would be "67".

B. Body Build Date Code

Comprised of three digits, 01 through 12 represent each month of the year and A through E represent alphabetically each week of the month. For example, 11B would represent a body build date of the second week of November.

C. Body Style Code

First two digits represent the Camaro model code ("12") and the last two are the body code. Coupes possess the code "37" while convertibles have the code "67" instead. In 1967, the middle digit was set to "4" for standard interior and "6" for custom interior. From 1968-69, the middle digit had no significance and was set to "4" for all vehicles.

D. Assembly Plant Code

Three letters indicate the assembly plant code; the Fisher Body plant where the vehicle underwent primary assembly. Between 1967 and 1969, only two plants assembled Camaro models: Norwood, Ohio ("NOR") and Van Nuys, California ("LOS"). In mid-December 1968, the "LOS" code for the Van Nuys plant was changed to "VN".

E. Fisher Body Number

Up to six digits follow the assembly plant code and represent the Fisher sequential body number. Not to be confused with the V.I.N. sequence, this number was approximately sequential, but was for Fisher Body's tracking purposes only. In 1969, the number was assigned when the order was accepted, not when the body was built. This meant that body numbers were not necessarily sequential.

F. Fisher Body LOS Scheduling Code

The Los Angeles ("LOS") body scheduling code consists of a letter followed by one to three digits. The letter indicates the production day of the month for the beginning of that vehicle's assembly. The letter "A" indicates the first production day of the month, and was reset the first production day of the next month. The three digits represent the vehicle's approximate production number each day. At the start of the next day, the code was reset to "1". This number is exempt from body style, thus a full size vehicle could be serially located just before a Camaro or Nova. This code was not used on Norwood-built vehicles.

*For 1967 Norwood-built cars only, the code was shortened to only one letter and represented the interior paint color code for vehicles built at the Norwood, Ohio plant. Los Angeles ("LOS") cars would retain the common one-letter one-to-three-digit code.

G. Interior Trim Code

The three digits of the TR (trim) code are unique for each year. The combination indicates the color as well as standard or custom interior style. In 1967, a hyphenated letter suffix indicates seat and headrest type. For example, "765-Z" represents the interior trim of standard A50 Strato bucket seats without headrests, trimmed in black custom upholstery.

H. Exterior Paint Code

The exterior paint code indicates body paint color and top color. It included vinyl or convertible top if equipped. For cars without vinyl or convertible top, the body color was stamped on the tag twice. Paint codes had alphabetic codes in 1967-68 and numeric codes in 1969. Vinyl and convertible top codes were numeric in 1967-68 and alphabetic in 1969. Two-tone paint was only offered in 1969, thus the paint code could have two different numeric codes in 1969.

I. 1967 Body-Related Option Codes

This list of option codes was used until 1967 for Chevrolet models and indicated body-related options that would be relevant to Fisher Body. The information was eliminated in 1968.