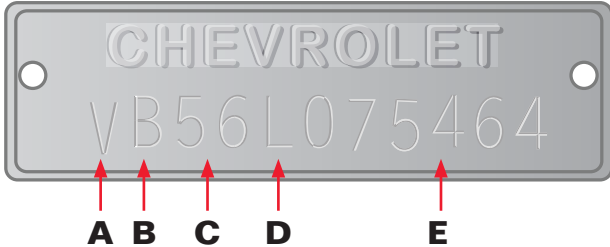


1955-57 V.I.N. Identification

The Vehicle Identification Number (V.I.N.) plate on all 1955-57 models is located on the left front door hinge pillar post. This number represents the vehicle's unique serial number for use with government agencies and vehicle model identification. Below is a guide for decoding a 1955-57 V.I.N.



A V8 Model

In addition to the Series and Model Identification letter, models equipped with a V8 from the factory will contain a "V" before the Series and Model ID. Models originally equipped with a 6 cylinder engine did not feature this "V" at the beginning of the V.I.N.

B Series and Model

The second letter in the V.I.N. sequence is the Series and Model Identification digit. Each Series received a unique letter.

Code	Series	Model
A	1500	150 Models
B	2100	210 Models
C	2400	Bel Air Models

C Model Year

The first set of numbers in the V.I.N. sequence represents the model year of the vehicle.

Code	Model Year
55	1955
56	1956
57	1957

D Assembly Plant

The final letter of the V.I.N. represents the assembly plant at which the vehicle was built. Between 1955-57, ten primary assembly plants manufactured passenger cars. Oakland, CA used the plant code "O", which can sometimes cause confusion with the sequence number, especially in 1955-56 models where the sequence begins with a zero.

Code	Assembly Plant
A	Atlanta, Georgia
B	Baltimore, Maryland
F	Flint, Michigan
J	Janesville, Wisconsin
K	Kansas City, Missouri
L	Los Angeles, California
N	Norwood, Ohio
O	Oakland, California
S	St. Louis, Missouri
T	Tarrytown, New York

E Production Number

The production number sequence represents the basic serial number given at the assembly plant. This six digit long sequence began with "001001" in 1955-56, while in 1957 the sequence began with "100001". Each plant used their own unique sequence numbers.